

The Water Quality Reports for the Kaua'i Department of Water, for the year 2001, were mailed out to all DOW customers in June 2002.

There is a report available for each of the thirteen water systems on Kaua'i.

The Water Quality Report contains basic information on the source(s) of your water, the levels of any contaminant in the water and compliance with other drinking water rules, as well as some brief educational material.

Kaua'i's Water meets all of the Environmental Protection Agency's guidelines for Safe Drinking Water and any contaminant found were well below the highest levels allowed by the EPA.

For more information or additional copies of the report, please call the Kaua'i Department of Water at 245-5400, or visit our website at: www.kauaiwater.org.

Xeriscape Garden at the Department of Water



The DOW has installed a demonstration xeriscaped garden at its Lihue office. You can visit this garden at 4398 Pua Loke Street, which is just behind the Kukui Grove Office buildings.

This xeriscape garden is planted with specimens both endemic - found only in Hawai'i - and indigenous - plants that thrive in Hawai'i as well as other places. These drought tolerant plants are easy to grow and look great!

A Xeriscaping Handbook is available from the DOW. Call Kymm Solchaga at 245-5455 for your copy.

Water Plan 2020 Projects Update

The DOW has three Water Plan 2020 projects that were bid for construction during March and April 2002. Two of the projects are in the Hanapepe-Eleele water system. Job 97-5 is to replace a 12-inch deteriorating pipeline and construct a concrete pavement cover/paved road.

Job 97-6 is to rehabilitate the old 27-inch steel pipe that moves water from the Hanapepe Valley to the Eleele tanks. The existing cross-country pipeline was originally installed by the plantation.

Job 95-3 Kekaha-Waimea Booster Pump Station, consists of furnishing and installing a brand new permanent booster pump station and all other work necessary to provide a complete operational

system at the booster pump station site.

Additional projects under construction include the development of the final phase of the Lihue-Hanamaulu project (two new wells), and Kapilimao Valley Well, which were awarded earlier this year.

Construction of Puhi Wells 5A and 5B continues, and at least one of these wells is scheduled to be operational by summer of this year. Kokolau Tunnel is in the final stages of completion. We are currently analyzing water samples, and expect to bring this water source back on line in the near future.

We continue to replace and repair pipelines, tanks, and are working on several other projects in design.

Anticipated Construction Projects for 2002

Project	Start Date	Est. Cost	Duration
1. Koloa Well F Development	2nd Quarter	\$1,500,000	12 months
2. Lihue Steel Tank repair	2nd Quarter	\$ 700,000	6 months
3. Kuhio Hwy.. Wailua Pipeline	2nd Quarter	\$1,200,000	6 months
4. Wailua Hmstds. #3 Drilling	2nd Quarter	\$ 400,000	6 months
5. Wainiha Tank Replacement	1st Quarter	\$ 75,000	3 months
6. Kilauea Booster Pump	2nd Quarter	\$ 250,000	3 months



Who Owns that Pipe?

Whenever there is a leak or break in the pipe, there is always the question of responsibility. Everybody wonders: who is going to fix the problem? Or, more importantly: who is going to pay to fix the problem?

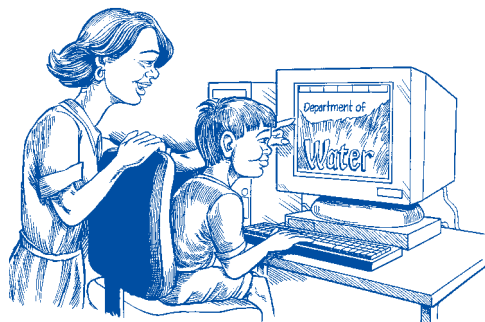
The answer is simple. The DOW is responsible for all pipes leading up to and including your water meter. You are responsible for the pipe from the meter to your house and all water fixtures in your house.

Call the DOW if there is a leak occurring anywhere between the street and your water meter. Call a plumber if the leak occurs between the meter and your house.

Safeguarding Our Water Supply

Even though Kaua'i seems a safe haven in our troubled world, it is prudent to safeguard our water supply. All of our DOW employees will be wearing ID badges and their vehicles will display Auto ID Tags. Anyone making a delivery to the DOW baseyard or any other visitor to our facilities must check in at the front desk and obtain a visitor or contractor ID badge. All visitors must be escorted by a DOW employee.

See Us on the Web



Discover where your water comes from and what we are doing to improve our island's water supply. Visit our website at www.kauaiwater.org.

- Updated forms and applications
- New Keiki section
- More Water Conservation Tips
- Low flow fixtures



Disaster Preparedness

Nothing can prevent hurricanes and other disasters from happening, but we can be prepared. Most people need a gallon of drinking water per day and, in the event of a disaster, it can take three or more days to restore or to bring in an alternate water supply. Store at least three gallons of drinking water for each person in your family in clean, airtight containers. To ensure freshness, replace this every 6 months.

If a disaster warning comes, fill your sinks, tubs and other containers to supplement the water you've stored. If you are caught unprepared, the drain on your hot water heater can supply you with a good amount of water in an emergency.

This year we have 25 Kaua'i residents who will participate in our 2002 Residential Water Audit Program.

The primary purpose of this program is to assist customers on how to check for possible leaks on their property, develop data on residential usage and provide information on water conservation.

Our water audit team is trained to conduct a minimal leak detection survey of your property. If a leak is detected, team members will inform you.

As part of this survey, Kaua'i Department of Water outreach workers will inspect the toilet, sink and bathroom fixtures, the landscaping, and the water meter. Customers will also be interviewed on their water use patterns. Information for this survey will also be included in a database, now being developed for the Department of Water. Response to the survey is voluntary; names of respondents will be kept confidential.

K
E
E
W
K
A
E
L
A
T
C
E
T
E
D