

BOARD OF WATER SUPPLY of the COUNTY OF KAUA'I

SPECIAL BOARD MEETING

Second Floor, Microbiology Lab Bldg
Kaua'i County Department of Water
4398 Pua Loke Street, Lihu'e, Kaua'i, Hawai'i 96766

THURSDAY, DECEMBER 27, 2012

10:00 a.m.

Or soon thereafter

AMENDED

A. CALL TO ORDER

B. ROLL CALL

C. ACCEPTANCE OF AGENDA

D. NEW BUSINESS

1. Manager's Report No. 13-20 – Request Board Approval to Amend Source Water Protection Grant previously received with Additional Grant Funds from the Department of Health.

E. EXECUTIVE SESSION

Pursuant to H.R.S. §92-7(a), the Board may, when deemed necessary, hold an executive session on any agenda item without written public notice if the executive session was not anticipated in advance. Any such executive session shall be held pursuant to H.R.S. §92-4 and shall be limited to those items described in H.R.S. §92-5(a).

1. *Pursuant to Haw. Rev. Stat. §§92-4 and 92-5(a)(4) the purpose of this executive session is to receive and consider a letter from the Manager and Chief Engineer responding to certain inquiries posed by the Board at the October 25, 2012 Board meeting. The purpose of this to consult with the Board's attorney on questions and issues pertaining to the Board's powers, duties, privileges, immunities, and liabilities as it relates to the Manager's response letter dated October 29, 2012.*

F. ADJOURNMENT

DEPARTMENT OF WATER

County of Kaua'i

"Water has no Substitute – Conserve It!"

MANAGER'S REPORT No.13-20

December 27, 2012

Re: Request Board Approval to Amend Source Water Protection Grant previously received with Additional Grant Funds from the Department of Health.

RECOMMENDATION:

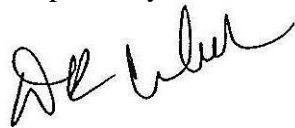
The Department requests the Board's approval to amend a previous grant to accept additional grant funds from the Department of Health for Source Water Protection.

BACKGROUND:

The Department of Health is offering to amend the original Source Water Protection grant to allow a Source Water Protection proposal from the Kauai Watershed Alliance. Refer to the attached correspondence from Mr. Chipper Wichman, Director and CEO – National Tropical Botanical Garden, Chair of the Kaua'i Watershed Alliance, dated December 12, 2012 for the proposal. The proposal request is for over \$900,000. Since the proposal from the Department of Health, dated December 13, 2012 is currently less than that amount, we would request that the Board not limit the grant to the \$250,000 currently offered, as the amount could change. Instead, we are requesting the Board to accept the grant with a motion to accept up to the amount of the proposal.

This is a rare opportunity for the Kauai Water Shed Alliance to move forward with its protection plan earlier than expected with the current financial condition of usual funding sources. Even though the Water Department has no land in the partnership, it is a primary beneficiary of the work done which protects our water sources for future generations.

Respectfully submitted,



David R. Craddick, P.E., C.E.M.
Manager and Chief Engineer

DRC:ein

Mgrrp/December2012/13-20 Request Board Approval to Amend Source Water Protection Grant previously received with Additional Grant Funds from the Department of Health (12-27-12):ein

Attached: Correspondence from Mr. Chipper Wichman, Director and CEO – National Tropical Botanical Garden, Chair of the Kaua'i Watershed Alliance, dated December 12, 2012
Correspondence from Mr. Dan Chang of the Department of Health dated December 13, 2012.



Kaua'i Watershed Alliance

"The Mission of the Kaua'i Watershed Alliance is to PROTECT, PRESERVE and MANAGE our valuable watershed resources for the benefit of our residents, communities and all future generations through the concerted efforts of its members."

12 December 2012

Daryl Kaneshiro, Appointed - Chair
Kauai County Board of Water Supply
P.O. Box 1706
Lihue, HI 96766

Dear Chair Kaneshiro,

I am pleased to report that today, December 12, 2012, the members of the Kauai Watershed Alliance (KWA) unanimously approved submitting the attached proposal to the Kauai Board of Water Supply to undertake the Koaie Protective Fence Project which is an approved part of our updated KWA Management Plan. The Koaie Protective Fence Project is a key component of our Management Plan to protect the "source water" for our island.

Currently only about ten percent of the priority watersheds in the State are protected from feral ungulates and ecosystem transforming invasive weeds. We need to undertake large-scale watershed protection, and the KWA stands ready to help in this effort. Years of research have documented that healthy ungulate free watersheds are the key to protecting "source waters" which are critical to the long-term health and well being of our communities.

We have made some important progress on Kaua'i over the past several years, and the Koaie Protective Fence Project represents an opportunity to take another proactive step towards protecting watershed health. I have attached a proposal taken from the KWA Management Plan that describes the project and how important it is for the "source water protection" for our island.

On behalf of the members of the KWA we look forward to working with the DOW and The Nature Conservancy (the KWA Coordinator) to effectively implement this important project. Please do not hesitate to contact me should you have any questions.

Aloha,

Chipper Wichman
Director and CEO - National Tropical Botanical Garden
Chair of the Kauai Watershed Alliance

cc: David Craddick, DOW Manager & Chief Engineer

c/o KWA Coordinator • The Nature Conservancy • 4180 Rice Street, Suite 102B • Lihue, Hawai'i 96766

Ben A. Dyre Limited Family Partnership, Department of Hawaiian Homelands, Department of Water County of Kaua'i,
DLNR – Division of Forestry and Wildlife & Land Management Division, Grove Farm Company, Inc., Jurassic Kahili Ranch,
Kamehameha Schools, Kaua'i Ranch LLC, Lihue Land Company, McBryde Sugar Company, Ltd.,
National Tropical Botanical Garden, Princeville Development, LLC
www.kauaiwatershed.org

From: Chang, Daniel H [<mailto:daniel.chang@doh.hawaii.gov>]
Sent: Thursday, December 13, 2012 2:34 PM
To: Craddick, David
Subject: RE:

David:

We have reviewed the proposed watershed project and tentative plan on providing funds to the project (pending Board approval).

The DOH is proposing to fund the project with \$250,000 through a modification of the existing Wellhead Protection Program – Financial Assistance Program Grant for Wellhead Protection.

Dan

From: Craddick, David [<mailto:dcraddick@kauaiwater.org>]
Sent: Wednesday, December 12, 2012 9:06 AM
To: Chang, Daniel H
Subject:

Dan

This is the proposal I have.

Our Board will be having a special meeting to accept the project subject to funding availability and subject to your initial okay.

David Craddick PE, CEM
Manager
Kauai Water Department
4398 Pua Loke St
Lihue, HI 96766

Source Water Protection

Koaie Protective Fence Project

The high elevation region of Kaua'i known as the Alaka'i Plateau is noted worldwide for its exceptional recorded annual rainfall, especially the eastern portion. These areas contain functional native Hawaiian forested watersheds but are threatened by habitat modifying invasive plants and animals. They receive and harvest (via cloud drift) large amounts of rainfall, retain it, and allow it to recharge elevated ground water resources, as well as meter out surface water, to perpetuate many of Kaua'i's perennial streams that are the source for much of our irrigation water for agricultural purposes.

As coordinator for the Kaua'i Watershed Alliance (KWA), The Nature Conservancy will work with Kaua'i DOFAW, NARS, and other partners to expand the KWA's watershed protection to additional areas in the Alaka'i Wilderness Preserve. The next proposed watershed project, the Koaie Protective Fence Project (see map) will add additional critical watershed protection west of the already fenced and managed Alaka'i and Wainiha protective fences.

In particular Koaie serves as an important rainfall and cloud drip catchment area, in part providing water recharge for streams that feed into the Waimea River system. This river system and associated ground water is important for agricultural production and other human-uses on Kaua'i's west side. There is an urgent need for increased protection in these areas due to the increased degradation by feral animals and weeds, as well as anticipated effects of climate change that threaten to decrease precipitation amounts for leeward Kaua'i (Timm & Diaz, 2009). The ground water resources and west side agricultural lands are historically and currently dependent upon these resources; and they surely will play a more important role in the future.

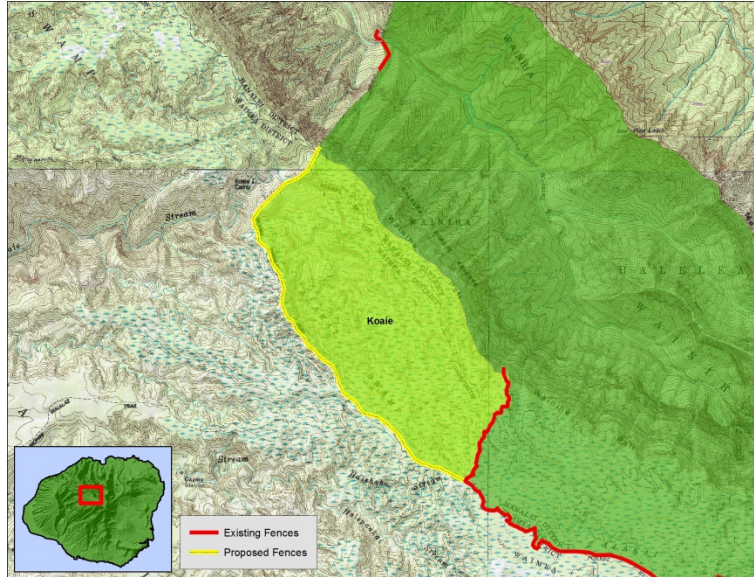
The project will include the construction of an ungulate proof fence, utilizing proven construction materials and methods to exclude feral ungulates such as pigs and goats. Fence construction will use the highest quality Bezinol coated hog wire, galvanized T-posts and wooden post as materials. An experienced contractor in remote fence construction will grub a surveyed alignment, fly up the material, and construct the fence according to specifications.

Once constructed, management of the new unit will follow the protocol used for the existing units - ungulate removal utilizing trapping and hunting; targeted invasive weed mapping and removal via aerial and ground treatment (primary weed threats include Australian tree fern, strawberry guava and Kahili ginger; fence monitoring and repair as needed; and animal and weed population monitoring.

The Koaie Protective Fence Project is part of a larger plan to protect priority watershed areas on Kaua'i.

Summary:

1. Koaie: This unit encompasses approximately 1,000 acres of intact, native-dominated montane wet forest and bogs. The area is a top priority for conservation due to its high rainfall, intact forest, importance to native forest bird populations, as well as its hydrologic function as the headwaters of Koaie Stream. Koaie borders both the Wainiha preserve and the Alaka'i protective fence, and would work in conjunction with the Halehaha and Drinking Glass units to establish a large contiguous ungulate free management area encompassing the wettest parts of the Alaka'i plateau.



Koaie	Acres	Approx. Fence Ft.
Protective Fence	1,040	15,507

Budget

Labor	\$30,000
Contractual	\$780,000
Subtotal	\$810,000
Conservation Support	\$145,800
TOTAL EXPENDITURES	\$955,800